

*tired of the*  
**ON, OFF, ON, OFF**  
*conversation?*



**Simply end it.**

**raindrop**  
NEAR VISION INLAY

# Tired of the *hassle* with readers?

As you age, your ability to see up close slowly declines. Most people over 40 experience age-related loss of near vision.

When you can't read the texts on your phone or fine print in general, you turn to your readers.

All day long, they're on and off. On and off. A pair next to your computer and one in your purse or pocket. A daily routine of frustrating repetition.

## Can you read this quote *without* your readers?

"There is beauty in simplicity."

If not, let Raindrop® Near Vision Inlay help you say goodbye to the "on, off" conversation.



# What is Raindrop?

Raindrop is a small, transparent disc called an inlay. It's made of ~80% water and from similar material to a soft contact lens.



The size of a pinhead and half the thickness of a human hair

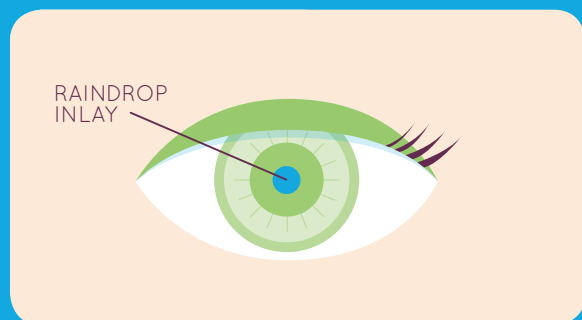
# What does it do?

Raindrop improves your near and intermediate\* vision quickly and simply. It is designed to reduce your need for readers, and patients typically see results in 1 week.

\*Intermediate vision (computer vision) was measured in the clinical study, but it was not a study endpoint.

## How does it work?

The Raindrop® Near Vision Inlay is placed just below the surface of the eye during a 10-minute procedure.



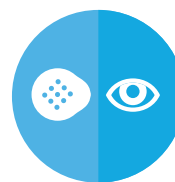
Raindrop helps to reshape the front of your eye so that you can see up close again.

## How long does it last?

Raindrop is intended to be a long-term solution for near vision improvement. If for any reason you need it taken out, it can be easily removed by your doctor.

## Is there follow-up care?

Raindrop allows you to resume normal activities such as driving and reading the very next day. Your doctor will prescribe simple follow-up care.



**Eye shield to wear at night**



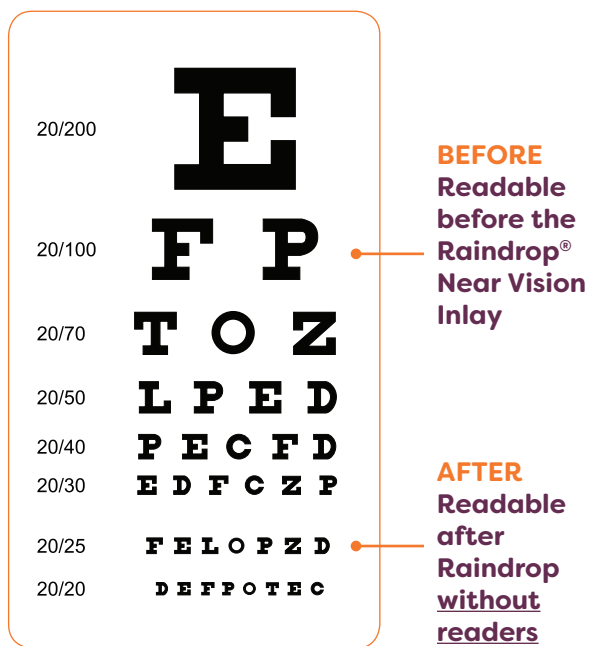
**Medications to minimize the risk of inflammation, infection, and dry eye**



**Follow-up appointments**

## Results seen as early as *week 1*

On average, patients **improved approximately 5 lines of near vision** on an eye chart without readers within 1 week.



## A dramatic difference through *24 months*

Two years after receiving Raindrop, most patients were able to **see everyday things again—without readers.**



**98%**  
could read the text size of a newspaper article  
(20/40 or better at a near distance)



**76%**  
could read the standard text size of an email on a computer screen  
(20/25 or better at an intermediate distance, also known as computer vision)

### Safety information

Among 135 patients who had the recommended procedure,\* the majority of side effects were mild, and none resulted in any long-term issues. There was also a low amount of complications.

Starbursts, scatters from bright lights (glare), and rings around lights (halos) may be visible after the procedure but will likely improve in time.

Dry eye may worsen, but can be treated with over-the-counter eye drops to maintain eye comfort. If for any reason Raindrop is not right for you, it can be easily removed by your doctor.

\*These patients had the recommended Raindrop procedure performed on them. The size and depth of the LASIK-like flap created on the eye was slightly different, and patients were given 3 months of steroids.

# Start a *new conversation*

Ask your doctor how the **Raindrop® Near Vision Inlay** is designed to reduce or eliminate your need for readers.

[www.raindropinlay.com](http://www.raindropinlay.com)

## INDICATIONS FOR USE AND SUMMARY OF IMPORTANT INFORMATION FOR THE RAINDROP NEAR VISION INLAY

**CAUTION:** Federal law restricts this device to sale by or on the order of a physician.

**ATTENTION:** Please see Professional Use Information and/or Patient Information Brochure for a complete list of Potential Risks, Warnings and Precautions.

**INDICATIONS FOR USE:** The Raindrop Near Vision Inlay is indicated for intrastromal implantation to improve near vision in the non-dominant eye of phakic, presbyopic patients, 41 to 65 years of age, who have manifest refractive spherical equivalent (MRSE) of +1.00 diopters (D) to -0.50 D with less than or equal to 0.75 D of refractive cylinder, who do not require correction for clear distance vision, but who do require near correction of +1.50 D to +2.50 D of reading add.

### SUMMARY OF IMPORTANT INFORMATION

The Raindrop Near Vision Inlay may not eliminate the need for reading glasses.

Implantation of the Raindrop Near Vision Inlay has the potential to cause vision and eye symptoms; dry eyes; decreased vision; decreased contrast sensitivity; problems with the cornea, such as clouding, thinning, scarring, and inflammation; eye infection; increased eye pressure; and the need for another eye surgery, such as removal or replacement of the inlay, or other treatment.

You should not have the Raindrop Near Vision Inlay implanted if you have severe dry eye; have an active eye infection or active inflammation; have signs of corneal disease characterized by general thinning and cone-shaped protrusion in the center of the cornea (keratoconus) or keratoconus suspect; have abnormal features of the outer part of the eye (cornea) to be implanted; have active abnormal immune response (autoimmune) or connective tissue diseases; do not have enough corneal thickness to safely have the procedure performed; have a recent herpes eye infection or problems resulting from a previous infection; have uncontrolled build-up of high pressure in the eye (glaucoma); have uncontrolled high blood sugar (diabetes).

Before having the Raindrop Near Vision Inlay procedure you should have a complete eye examination and talk with your eye care provider about alternative treatments, potential benefits, complications, risks, healing time, and any other concerns you have about having the procedure.

For the full Patient Label, please visit [raindropinlay.com](http://raindropinlay.com)

**raindrop**  
NEAR VISION INLAY

**RVO**  
REVISION OPTICS